

SIMU-PL TRUCK SIMULATOR

Getting started Guide



Truck Simulator Summary

General overview	2
Setting up	3
Global plan	6
Global electrical panel	7
PC cabling and air compressor calibration	8
Electric start up	9
Stopping the simulator	10

Reference document:

- The "STAR PL" Software User Guide
- The "APDLL Calibration Manual" - active controls settings & calibration (maintenance and diagnosis tool).

Truck Simulator General Overview

The serial simulator comes with:

- 3 55" TV with power cables
- 3 TV Standers - H = 1.70m
- 1 10" Tablet PC
- 1 anti-theft system and stand support for tablet PC
- 1 mouse
- 1 Azerty keyboard (or Qwerty for foreign markets)
- 1 keyboard support with 2 bolts
- 1 Software user guide and 1 software patent
- 1 Software "Area" Wall Map
- 1 headphone with 1 USB adapter
- 1 PC + router + SG-lock software licence key
- 1 power cable and 1 "4 plug" multi-socket



Truck Simulator

Setting up



After installation, lock the castor-wheels of the simulator and TV standers.



Adjust the TV Stander's rails and engage them in the 4th position at the top.

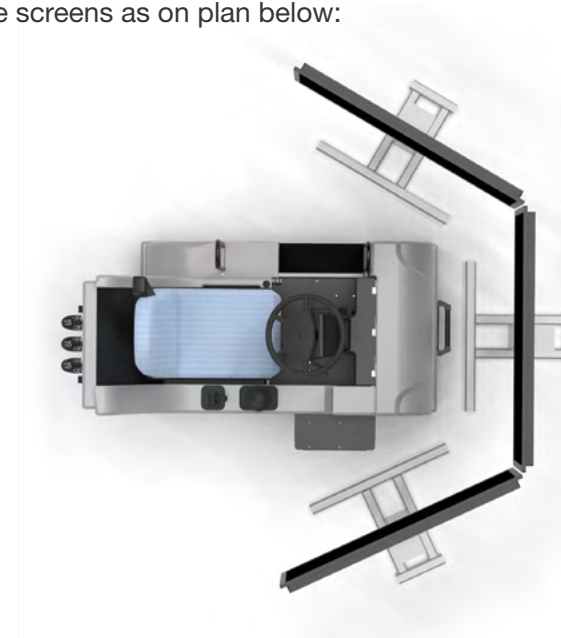


Be care when unpacking TVs. Fix them with the bolts (they are delivered and pre-installed on the TV's).



Unscrew the 2 upper bolts slightly and completely remove the 2 lower bolts, set up the TV, screw all the bolts tight again

Position the screens as on plan below:



Remove 2 wooden board at the front and back of the simulator



Connect power and video cables according the stickers

Truck Simulator Setting up

Truck Simulator Global plan

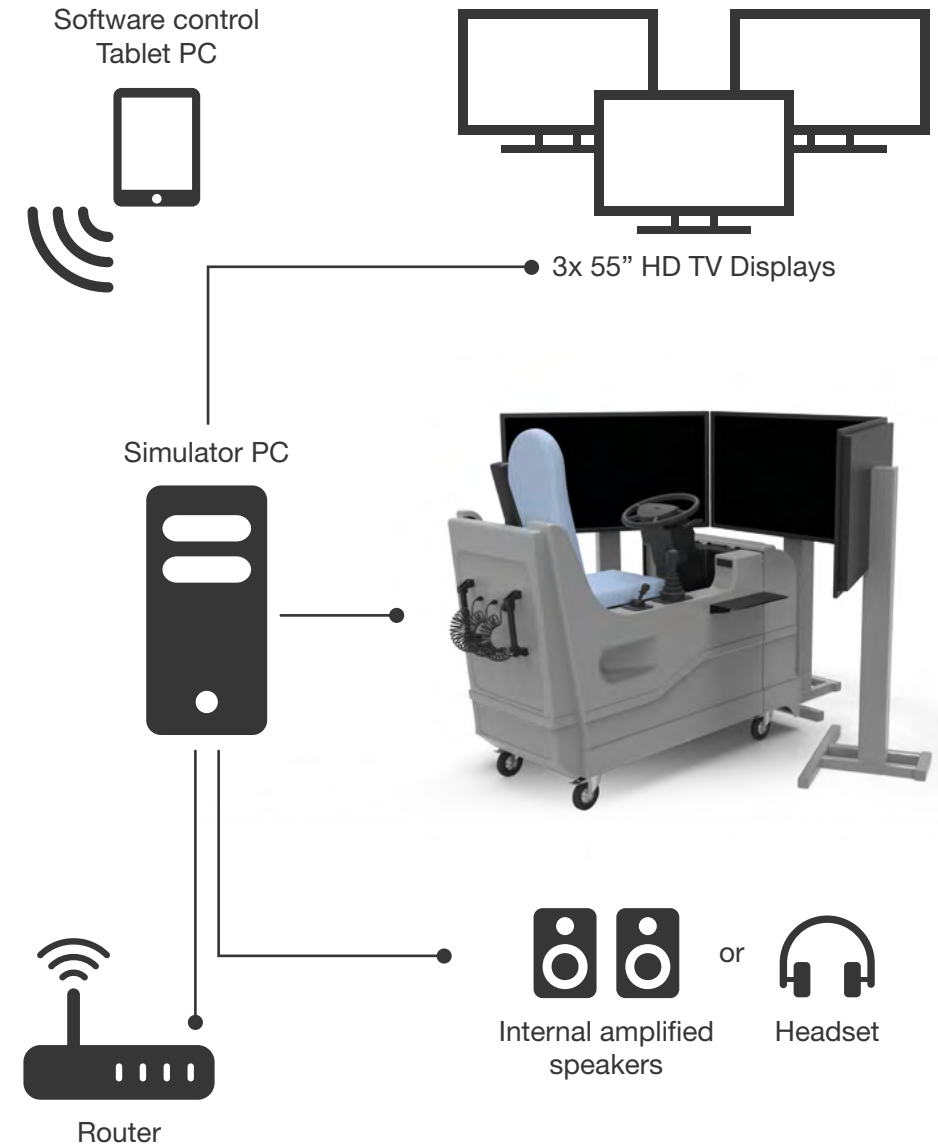


The left and right screens correspond respectively to the left and right sight of the user



Connect the mouse and keyboard to the USB jacks on the right-side front panel.

Check the connection of the various sockets: TVs, Simulator



Truck Simulator

General electrical panel

Open the top compartment on the front cover.



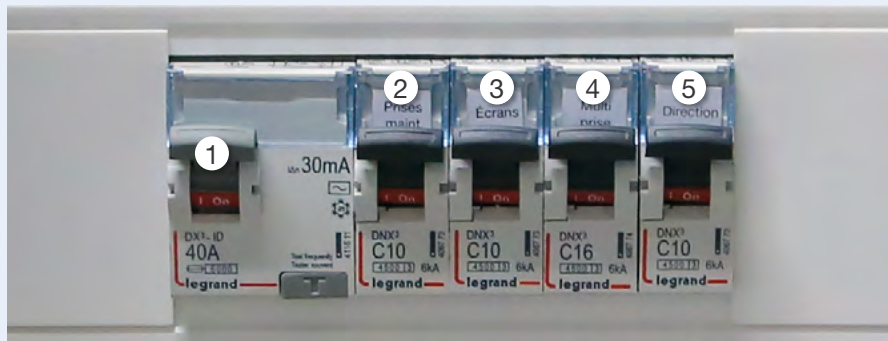
Truck Simulator

PC cabling and air compressor checking

Open the lower compartment on the front cover.



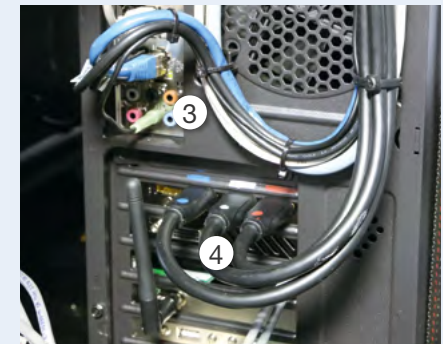
The various elements are identified on the table:



- 1 30 mA differential circuit breaker
- 2 10A circuit breaker for TV screens
- 3 10A right-side circuit breaker
- 4 10A motor circuit breaker
- 5 16A circuit breaker Router / Compressor / Cylinders / Amplifier / PCC



- 1 Compressor output pressure gauge: 4 to 6 Bars
- 2 Soft cylinder pressure gauge 0.45 to 0.55 Bars
- 3 Audio jack
- 4 3 HDMI cable outputs Blue / White / Red



Truck Simulator

Electric start

Before to start the devices: Please open the top flap of the front cover and check out the circuit breaker position. It must not be in the low position, otherwise please rise the circuit breaker(s) in the high position.



Turn on the 3 TVs.



Check that the tablet is fully charged, otherwise charge it.



Start the PC via the blue switch button, at the right side of the steering wheel.



Before starting the program, first create a training session. Please see the procedure in Software User Guide.



Launch the software from the Tablet PC and start exercises.



The driver is now able to start the training.

Truck Simulator

Turn off the simulator



Exit the software via the tablet PC. Please see the procedure in Software User Guide.



The driver can leave the simulator.



Shut down the computer.



Turn off the TVs.



Ensure that no one is near the simulator when the motion is base is getting in its initial position.



Once the computer is off and the screens are in stop mode, then switch off the differential switch on the electrical panel.



Lock the electric panel access door.

EDISER - 381, rue Raymond Recouly - CS 20043 - 34078 Montpellier Cedex 3
Tél : 04 67 07 38 38 - Fax : 04 67 07 34 00
e-mail : commercial@ediser.com - Site : www.ediser.com

